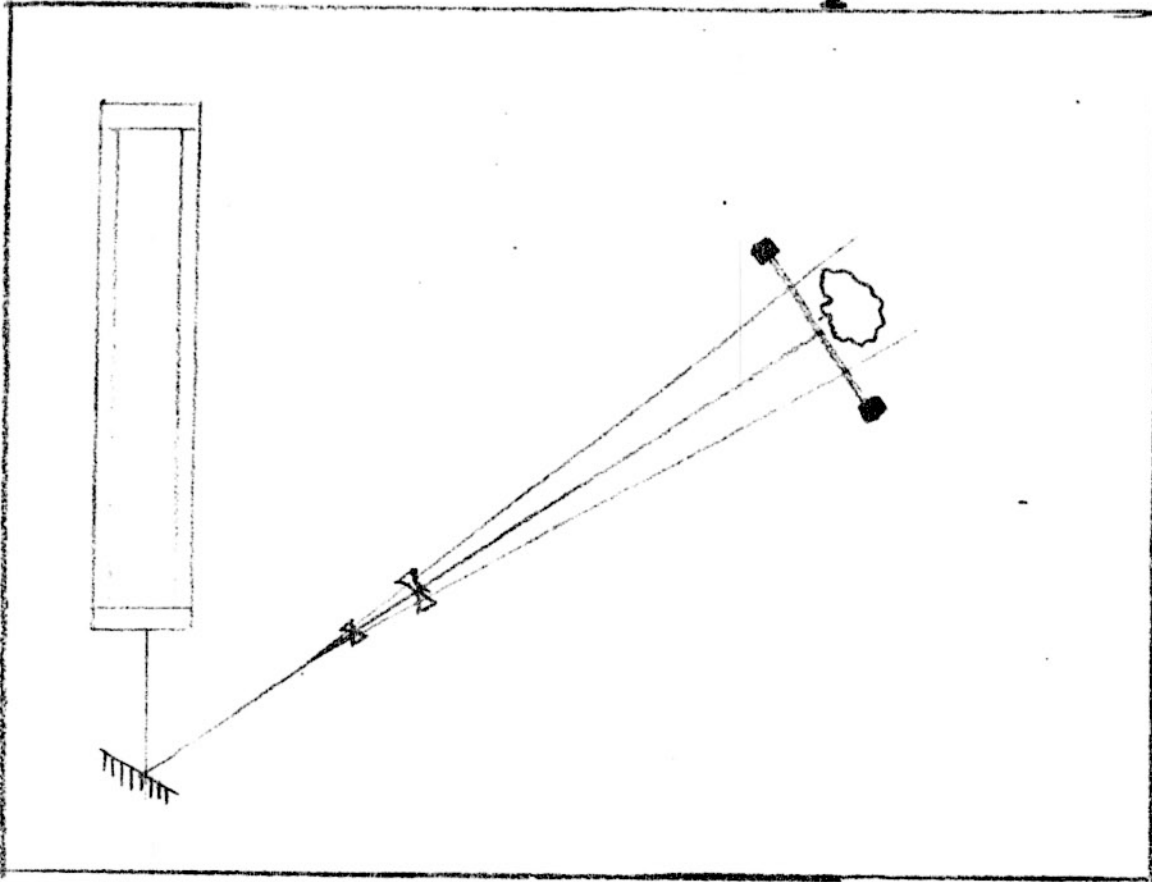


SINGLE BEAM REFLECTION head-on set up



notes

BECAUSE THE DEPTH OF THIS HOLOGRAM IS ONLY ABOUT TWO INCHES AND THE RATIO OF REFERENCE TO OBJECT BEAMS MUST BE 1 TO 1, YOU ARE LIMITED TO OBJECTS THAT ARE SHALLOW AND AS NEAR TO 100% REFLECTIVITY AS POSSIBLE. COINS, KEYS, NUTS, BOLTS, SPRINGS, HOOD ORNAMENTS AND LITTLE ROBOTS ARE USUALLY SUCCESSFUL. NO MOVEMENT CAN BE TOLERATED DURING EXPOSURE SO PILE PLENTY OF SAND AROUND ALL THE COMPONENTS AND HOT GLUE DOWN THE OBJECTS THAT MIGHT MOVE.

set up steps

- I. SEND BEAM DIAGONALLY DOWN THE TABLE WITH A SMALL MIRROR.
- II. SET UP THE OBJECT STAND AND FILM HOLDER.
- III. SPREAD THE BEAM SO THAT THE CLEAN AND BRIGHT PART OF IT JUST COVERS THE SIZE OF FILM YOU ARE USING.
- IV. MEASURE THE AMOUNT OF LIGHT HITTING THE FILM PLANE BY POINTING THE LIGHT METER INTO THE BEAM WITHOUT THE WHITE DIFFUSER CAP IN PLACE. THIS IS THE EXPOSURE READING. THERE IS NO NEED TO TAKE RATIO READINGS SINCE THE RATIO IS CONTROLLED BY THE REFLECTIVITY OF THE OBJECT.
- V. POSITION OBJECT RIGHT NEXT TO THE FILM HOLDER.
- VI. EXPOSE AND PROCESS.
- VII. THIS HOLOGRAM CAN BE RECONSTRUCTED UNDER WHITE LIGHT.