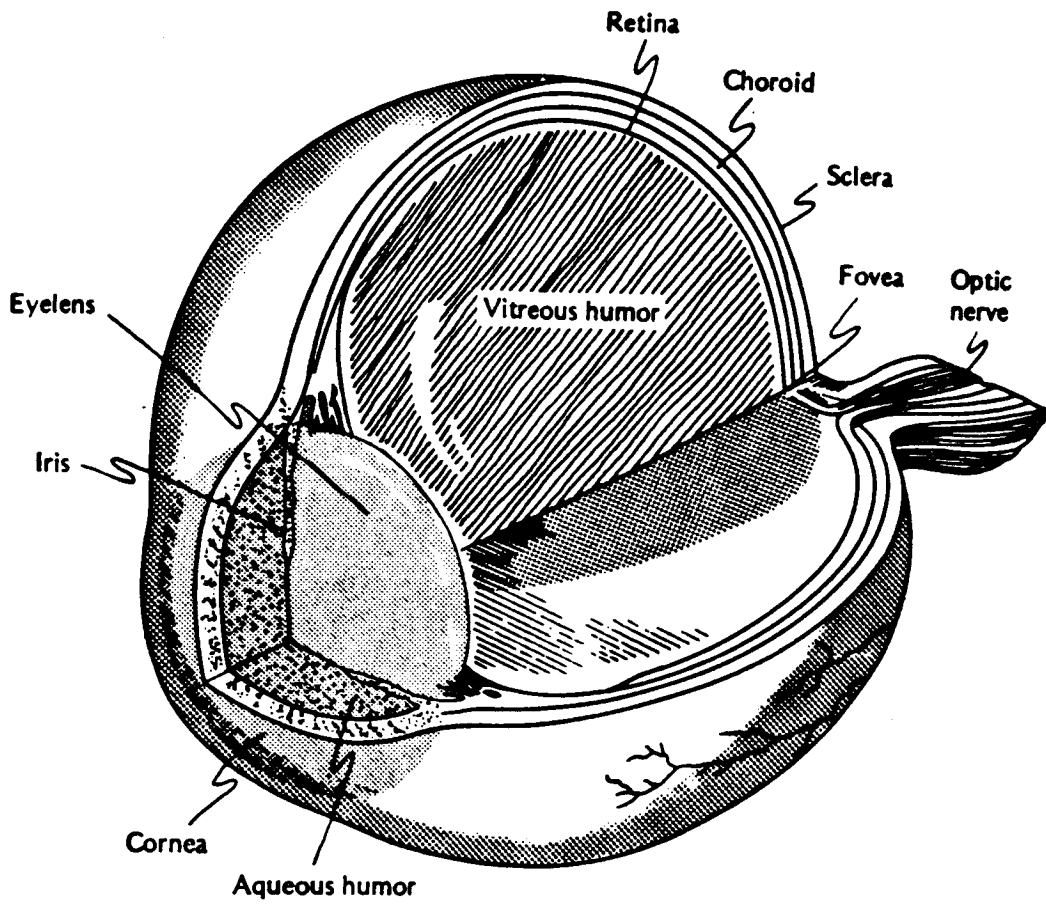


## ANATOMY OF THE EYEBALL

Take notes about what each part of the eye does on this page:



**CORNEA:**

**AQUEOUS HUMOR:**

**PUPIL:**

**IRIS:**

**EYELENS:**

**CILIARY MUSCLES:**

**ACCOMODATION:**

**VITREOUS HUMOR:**

**RETINA:**

**PLEXIFORM LAYER:**

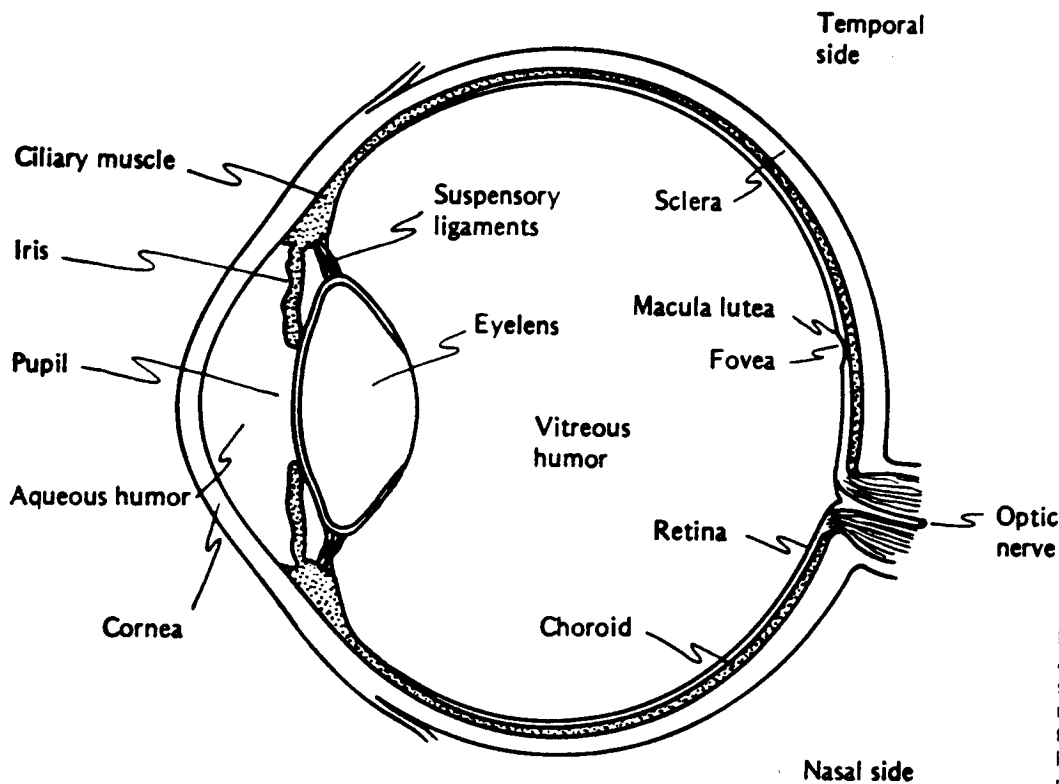
**RODS:**

**CONES:**

**FOVEA:**

**BLIND SPOT:**

**SCLERA:**



Locate your blind spot. At a distance of about 25 cm, close your left eye and stare at the X with your right eye. Slowly move the tip of your pen across the page toward the right from the X. Keep looking directly at the X, viewing the pen with your peripheral vision. At about 8 cm to the right of the X, the tip of the pen will no longer be visible, when its image falls on the blind spot. You can "map out" the extent of the blind spot by placing dots on the page where the tip of your pen becomes invisible.

X